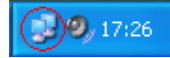


extra initialization command. This step is equivalent to setting APN in T-Modem Control Tool, so you must perform only one of the two steps.

- 8) Internet connection is set up successfully.

4. Connecting to the Internet.

- 1) Check if the device is connected to the PC and both red and green LEDs on the device are on and not blinking.
- 2) Click "Start->Settings".
- 3) Double click "Network connections" (WinXP), "Network and dial-up connections" (Win2000), "Dial-up connections" (Win95/98/ME).
- 4) Double click the connection you have just created.
- 5) Click "Dial".
- 6) You should get connected to the Internet in a few seconds. If the connection is successful, you will see a connection indicator (two green or blue small computers) in the system tray (lower right corner of the screen).
- 7) When you want to disconnect, double click the connection indicator and click "Disconnect".



5. Sending SMS.

Note: please make sure that SMS service is supported by your operator.

Note: please ensure that SMS centre number is defined it (T-Modem Control Tool, SMS -> Settings). If it isn't, ask your GSM operator for SMS centre number and enter.

- 1) Run T-Modem Control Tool.
- 2) Click SMS->Send.
- 3) Enter recipient phone number.
- 4) Enter the text.
- 5) Click "Send".
- 6) Wait for a dialog box, which will inform you about successful or unsuccessful procedure.

TROUBLESHOOTING

- 1) Problem: T-Modem Control Tool doesn't detect the modem.
Solution: Check if the device is connected and that both red and green LEDs are on.
- 2) Problem: Can't connect to the Internet,
Solution: Check if you plugged the device to the same COM port as you installed the driver.

LED INDICATION

"Power" LED is on	power supply is connected
"Status" LED is green and blinking	the device is powering up
"status" LED is green	the device is ready
"status" LED is yellow and blinking	no SIM card, PIN is not entered or no GSM service
"Status" LED is yellow	Connection active

FINAL NOTES

For more information, please read T-ModemCOM User Manual, which is found on the CD.

If you encounter any problems when using our products, please contact our technical support by writing an e-mail to support@teltonika.it . We will be pleased to help you.

T-ModemCOM TMC-103



Quick Start Guide v1.1

Thank You for purchasing T-ModemCOM from Teltonika Ltd. We hope you will be happy using our product. Please find a few minutes to read this Quick Start Guide before beginning to work with T-ModemCOM. This could prevent you from unwanted problems and save your precious time.

T-ModemCOM is a device with GSM / GPRS / EDGE / CSD / HSCSD connectivity which enables your computer to connect to the Internet quickly and easily. Having this device your PC will have Internet connection in any place of the world, where GSM network is accessible.

CONTENTS OF YOUR PACKAGE

- 1) T-ModemCOM,
- 2) AC/DC adapter,
- 3) Serial cable,
- 4) A CD (including drivers and User Manual),
- 5) A Quick Start Guide,
- 6) GSM antenna (optional, for devices with external antenna only).

If you miss any of the components listed, please contact your local representative.

HOW TO START QUICKLY?

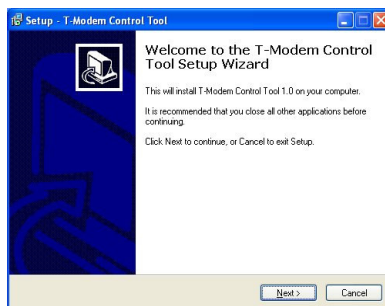
1. Hardware setup.

- 1) Insert SIM card to the device so, that **the metal contacts of the SIM card go first to the device and that they are facing the top of the device** and ensure that you pulled SIM card **to the end**. Please be careful **not to move the card during device operation**, as this would drop any active connections and modem reboot will be required.
- 2) Plug the female connector of the serial cable to the device.
- 3) Plug the male connector of the serial cable to a free port of your PC.
- 4) Plug the power connector to the device.
- 5) Plug the AC adapter to the AC outlet. If the power is OK, the red "Power" LED on the device will switch on.

2. Setting up software and driver for Microsoft Windows 95/98/ME/2000/XP.

2.1. Installing T-Modem Control Tool.

- 1) Please ensure that you have successfully completed hardware setup of the device.
- 2) Switch your PC on and boot Microsoft Windows.
- 3) Insert the CD, which is found in the package, into your PC CD tray.
- 4) An installation program will launch automatically. If it doesn't, open My Computer and double click on the CD-ROM drive. The setup program is located in folder "\\Software\\".
- 5) Click "Next" in 3 upcoming dialog boxes.
- 6) Click "Install" in final dialog box.
- 7) Leave checkbox "Launch T-Modem" checked and click "Finish".
- 8) Click "Search for T-Modem" in the T-Modem Control Tool.
- 9) The program will detect the device and show the COM port, to which the device is connected.
- 10) Installation of the T-Modem Control Tool is complete.



2.2. Installing modem drivers.

- 1) Click "Start ->Settings -> Control Panel".
- 2) Double click "Modems" (Windows 95, 98, ME) or "Phone and Modem Options" (Windows 2000, XP).
- 3) Select tab "Modems" and click "Add"
- 4) Check the box "Don't detect my modem" and click "Next". You may have to wait for a while after clicking this button, so please be patient.
- 5) Click "Have disk" in the new window.
- 6) Click "Browse" and select file "T-Modem.inf" in the CD drive in the folder "\\Drivers\\T-ModemCOM\\Windows\\".
- 7) Click "Open" and then "Ok".
- 8) Select "Teltonika" in the "Manufacturer" list, "T-Modem" in the "Models" list and click "Next". If you see several "T-Modem" models, select the newest one.
- 9) You will be asked to select a COM port. Select the port, which was detected by T-Modem Control Tool. **Please always plug the cable to the same PC COM port; otherwise you will have to install the drivers again.**
- 10) If you are using Windows XP, you will be asked if you want to continue as the drivers are unsigned. Click "Continue anyway", otherwise you will not be able to use the device.
- 11) Click "Finish".
- 12) Installation of modem drivers is complete.

3. Setting up an Internet connection.

Please consult your GSM operator for detailed instructions on how to get connected to the Internet. You should ask the operator to switch on the desired service (GPRS/EDGE or HSCSD) for your SIM card and to tell you how to configure your PC. The required parameters for connection are: **phone number, username, password and APN** (APN for GPRS/EDGE only).

There are two basic types of connections, which are different in the way they are paid for:

- Pay-for-time connection (CSD, HSCSD). You pay for the time you spend in the Internet. The speed is up to 14,4 kbps (CSD) or 43,2 kbps (HSCSD).
- Pay-for-data connection (GPRS, EDGE). You pay for the data you transfer. The maximum speed depends on the operator, but it may reach 115 kbps. If your operator supports higher speed and you want to reach it, you should use a COM port with higher baud rate (a USB<->COM or PCI-COM adapter) or purchase T-ModemUSB.

3.1. Setting up networking protocol and dial-up.

- 1) Please ensure that Dial-up networking is installed on your PC.
- 2) Please ensure that TCP/IP protocol is installed on you PC.

3.2. Setting up a dial-up connection.

Note: this step will be successful only if dial-up and TCP/IP protocol are installed.

- 1) Click "Start->Settings->Control Panel".
- 2) Double click "Network connections" (WinXP), "Network and dial-up connections" (Win2000), "Dial-up connections" (Win95/98/ME).
- 3) Click "Create a new connection".
- 4) Type in a desired name for connection, e.g. "GSM Internet".
- 5) Enter the given phone number (usually *99***1# or *99# for GPRS / EDGE).
- 6) Enter Username and password which are given by your GSM operator.
- 7) Select "T-Modem" in the modem list in "Properties" dialog box.
- 8) It is very important to enter APN (applies only to GPRS / EDGE connections). Run T-Modem Control Tool and click GPRS->Settings. Enter the APN in the dialog box. **Your operator may ask you to enter a special string like "AT+CGDCONT=..." as modem**